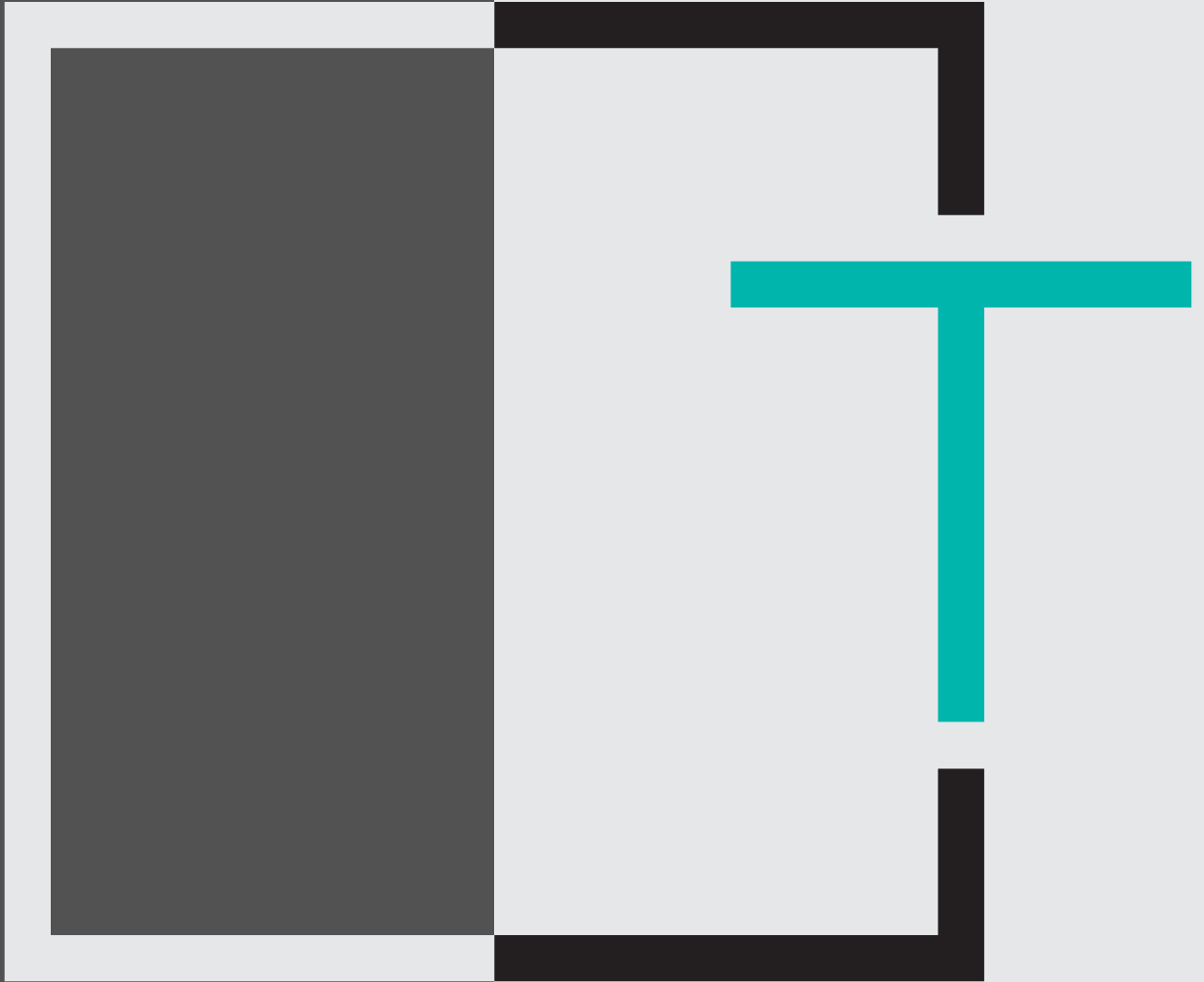


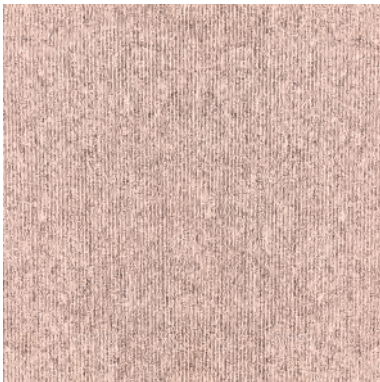
NEST 



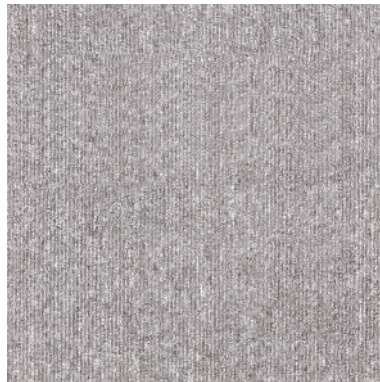
PRIME
ELECTRONICS

PRODUCT SPECIFICATION

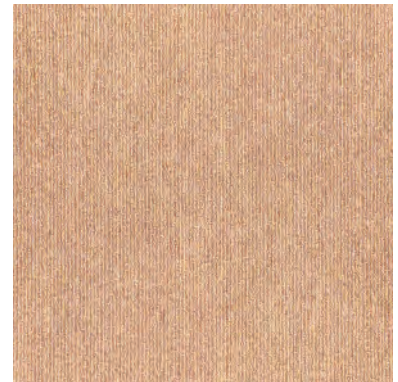
Product Name	Nest CT
Construction	Tufted loop pile
Pile Material	100% BCF Synthetic Fiber
Pile Weigh	14 oz +/- 2 oz
Pile Height	3 mm +/- 1 mm
Backing Type	EKO-Back (Bitumen with non woven)
Tile Size	50cm x 50cm
Tiles Per Carton	24 pcs



01-Brown



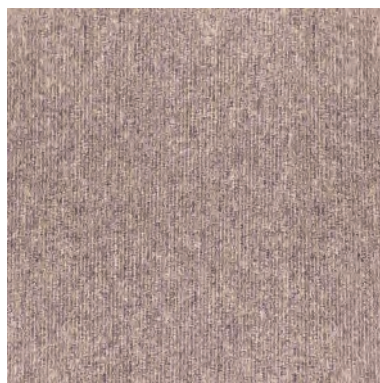
02-Grey



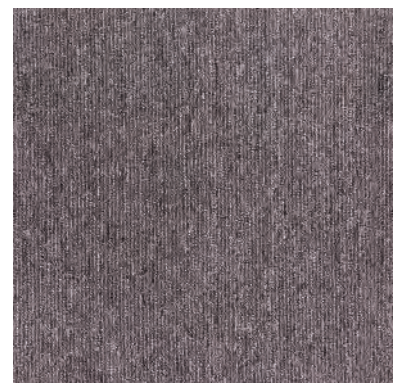
03-Copper



04-Blue



05-Rustic Grey



08-Black







PRODUCT GUIDE

Maintenance

- Vacuum cleaning on regular basis. Spot clean with approved carpet cleaner.
- We recommend performing a minor test of any cleaning solution on a hidden area or apply it to the sponge or any other before applying directly on carpet tile.
- Any spots or oil based need to be remove quickly as it's difficult to remove afterward.

Important Note

- All specifications are subject to normal manufacturing tolerance.
- Chair pads for office uses are recommended with roller coasters or if any to maintain appearance retention.
- Dye lot variation is common for carpet tiles, please get same dye lot in each project.
- Product shade or quality may vary slightly due to lot variation which is common in carpet tiles.
- Shading is the result of pile direction change often referred to as water marking, this is an inherent characteristic, therefore does not constitute a manufacturing defects.
- Pattern tiles may require special attention by the installer to assure perfect match on the floor.
- One of the big advantage of carpet tiles is that the damaged tiles can be easily replaced without any hassle. When replacing tiles, take note that a brand-new tile will look different tone or shade to surrounding tiles.

Recommended Laying Pattern:

